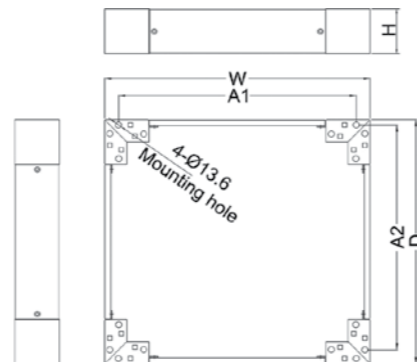
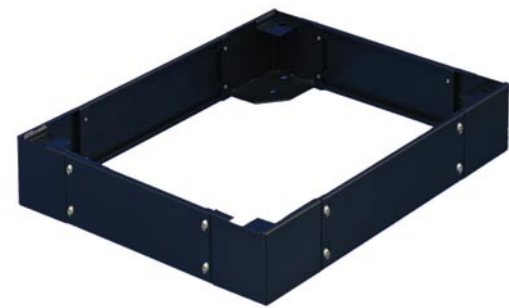




Base Plinth

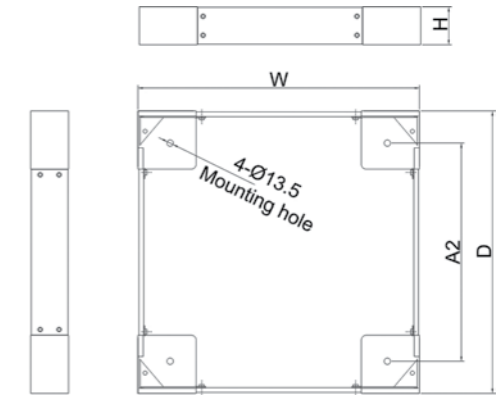
Base Plinths, installed at the base of the cabinets, provide an alternative solution to leveling stands with its purposely designed floor mounting ability. Its sufficient and adequate positioning of mounting holes allow for flexibility catered to the arrangement of the cabinets in various on-site requirements. Easy cross connection can be further achieve with multiple removable cable entrance plates.



Ordering Information and Physical Characteristics (KD & CC Models):

Model No.	Width(mm)	Depth(mm)	Height(mm)	A1(mm)	A2(mm)	Remarks
PL-64-CC	598	349	100	422	284.5	W600 x D400 Rack
PL-65-CC	598	449	100	422	384.5	W600 x D500 Rack
PL-66-CC	598	549	100	422	484.5	W600 x D600 Rack
PL-84-CC	798	349	100	622	284.5	W800 x D400 Rack
PL-85-CC	798	449	100	622	384.5	W800 x D500 Rack
PL-86-CC	798	549	100	622	484.5	W800 x D600 Rack
PL-04-CC	998	349	100	822	284.5	W1000 x D400 Rack
PL-06-CC	998	549	100	822	484.5	W1000 x D600 Rack
PL-84-2-CC	798	349	200	622	284.5	W800 x D400 Rack
PL-85-2-CC	798	449	200	622	384.5	W800 x D500 Rack
PL-86-2-CC	798	549	200	622	484.5	W800 x D600 Rack

*Finish with Epoxy Powder Coating: RAL7035 Light Grey or RAL9004 Black



Ordering Information and Physical Characteristics (ASE/AS/SE/BV Models):

Model No.	Width(mm)	Depth(mm)	Height(mm)	A1(mm)	A2(mm)	Remarks
PL-66	596	596	100	460	460	W600 x D600 Rack
PL-68	596	796	100	460	660	W600 x D800 Rack
PL-610	596	996	100	460	820	W600 x D1000 Rack
PL-86	796	596	100	660	460	W800 x D600 Rack
PL-88	796	796	100	660	660	W800 x W800 Rack
PL-810	796	996	100	660	820	W800 x D1000 Rack
PL-66-2	596	596	200	460	460	W600 x D600 Rack
PL-68-2	596	796	200	460	660	W600 x D800 Rack
PL-610-2	596	996	200	460	820	W600 x D1000 Rack
PL-86-2	796	596	200	660	460	W800 x D600 Rack
PL-88-2	796	796	200	660	660	W800 x W800 Rack
PL-810-2	796	996	200	660	820	W800 x D1000 Rack

*Finish with Epoxy Powder Coating: RAL7035 Light Grey or RAL9004 Black

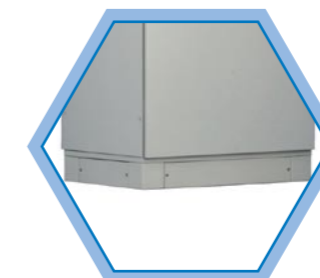


Illustration A

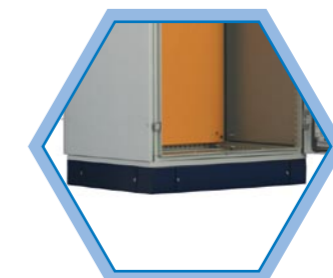


Illustration B